

KUTRIMMER®
by IDEAL

→ 1038 TABLETOP TRIMMER

Solingen steel blade set may be resharpened | transparent Lexan® safety guard automatically covers blade in every position | solid hand clamp, independent of blade handle | precision side guides scaled in inches and metric system | lockable back gauge | front gauge is adjustable using a calibrated rotary knob with fine adjustment scale, lockable in every position | narrow-strip cutting device | fold-away paper supports on front gauge allow precise cutting of lightweight paper stocks | standard paper sizes indicated on table | all-metal construction

Dimensions (D x W x H): 23 x 15 ½ x 10 inches, Shipping weight: 29 lbs.

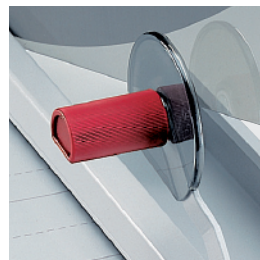


PAPER SUPPORTS



The fold-away paper supports on the front gauge allow precise paper alignment.

SOLID HAND CLAMP



Variable clamping pressure can be applied with the manual hand clamping device.

→ KUTRIMMER 1038

Cutting length 14 ¾"
Sheet capacity 50*
Table size (D x W) 16" x 14 ½"

* may vary due to variations in paper

Dealer:

MBM
CORPORATION

3134 Industry Drive
North Charleston, South Carolina 29418
800-223-2508, fax: 843-552-2974
www.mbmcorp.com

IDEAL.MBM
CORPORATION

1675 Sismet Road, unit 4
Mississauga, Ontario L4W 4K8
800-387-2528, fax: 905-840-1114
www.ideal-mbm.com